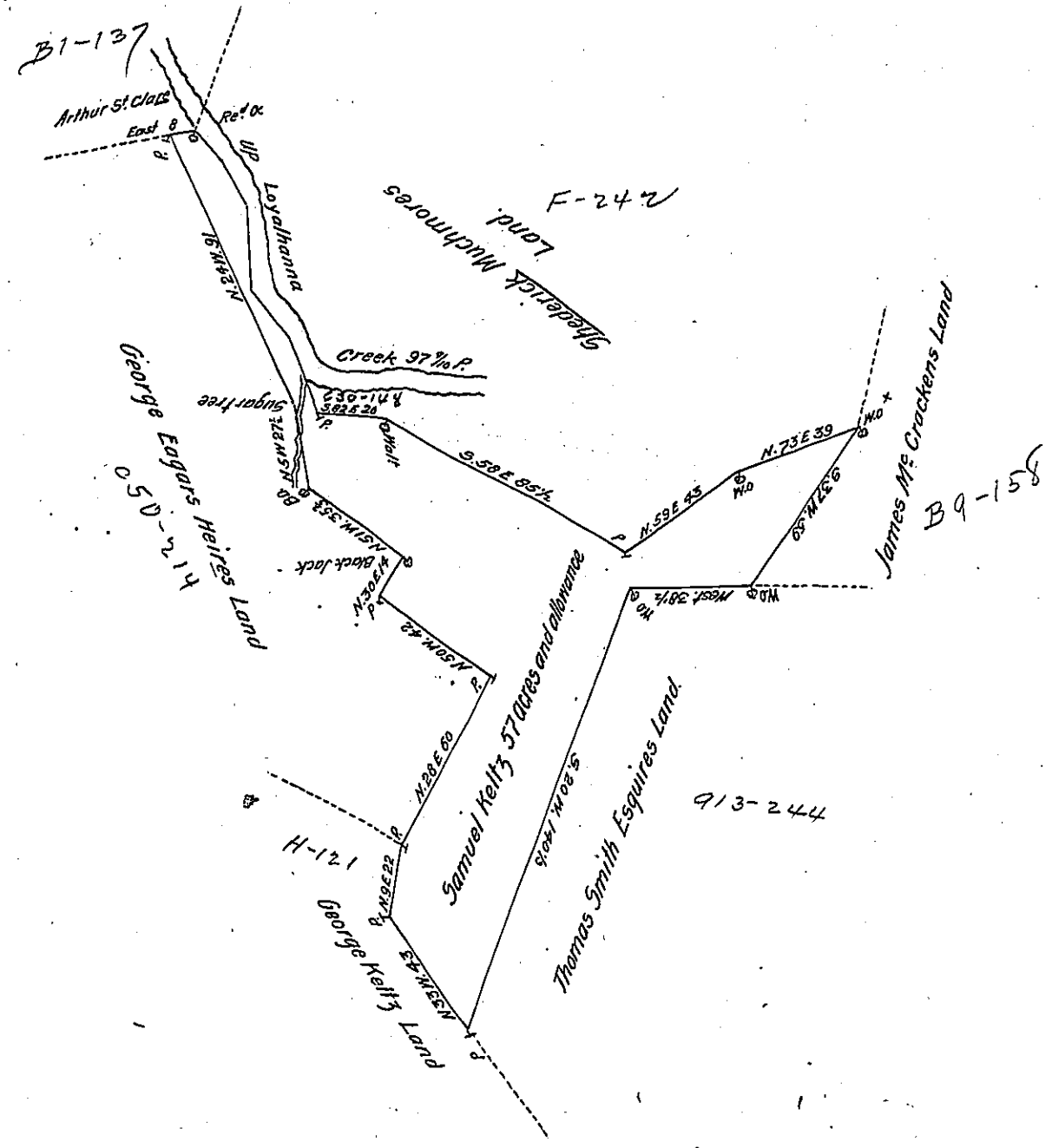


No. of Courses	Courses up Loyahanna Creek	Distances
1	S42E	12
2	S25E	15
3	South	25 1/2
4	S33E	19
5	S15E	26 3/4
Total dist.		97 1/2



In pursuance of a Warrant dated Nov^r 9th 1822 there was surveyed for Samuel Kelly the above described tract of Land containing fifty seven acres with an allowance of six per cent situate in Ligonier Township in the County of Westmoreland surveyed Dec^r 25th 1822

Samuel Cochran Esquire }
 Sur^r: Genl of Penna }

W. Isaac Moore D.S.

IN TESTIMONY that the above is a copy of the original remaining on file in the Department of Internal Affairs of Pennsylvania, made conformably to an Act of Assembly approved the 16th day of February, 1833, I have hereunto set my Hand and caused the Seal of said Department to be affixed at Harrisburg, this nineteenth day of October 1905.

W. Isaac Moore
 Secretary of Internal Affairs.